



# GMT MONTHLY MEMBERSHIP PROGRESS REPORT

Results as of: 2/29/2020

Multiple District 26

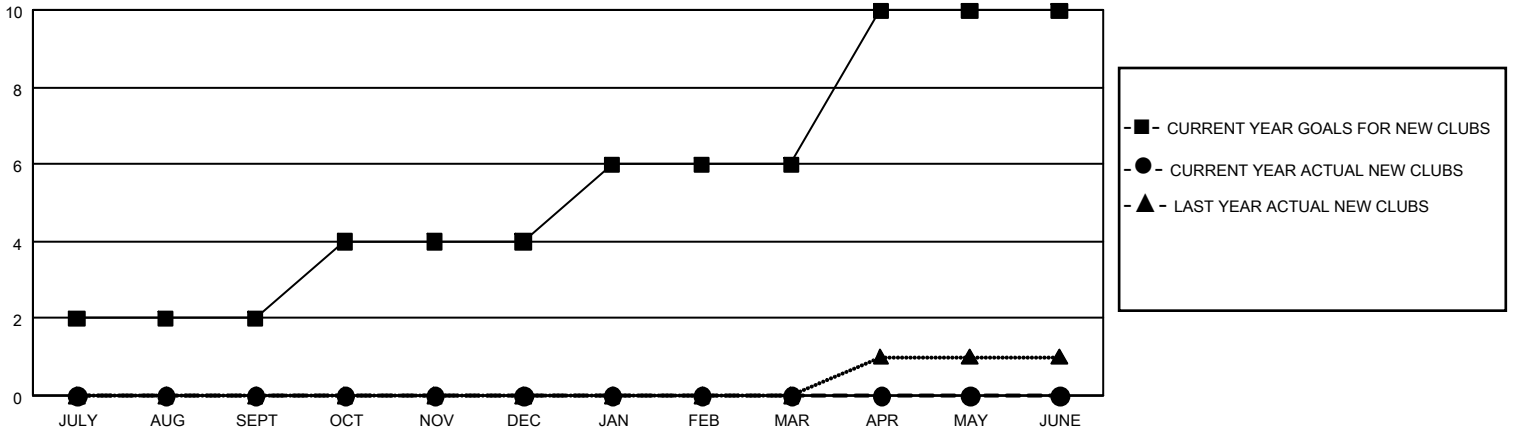
LOCATION: MISSOURI

GMT: OPEN

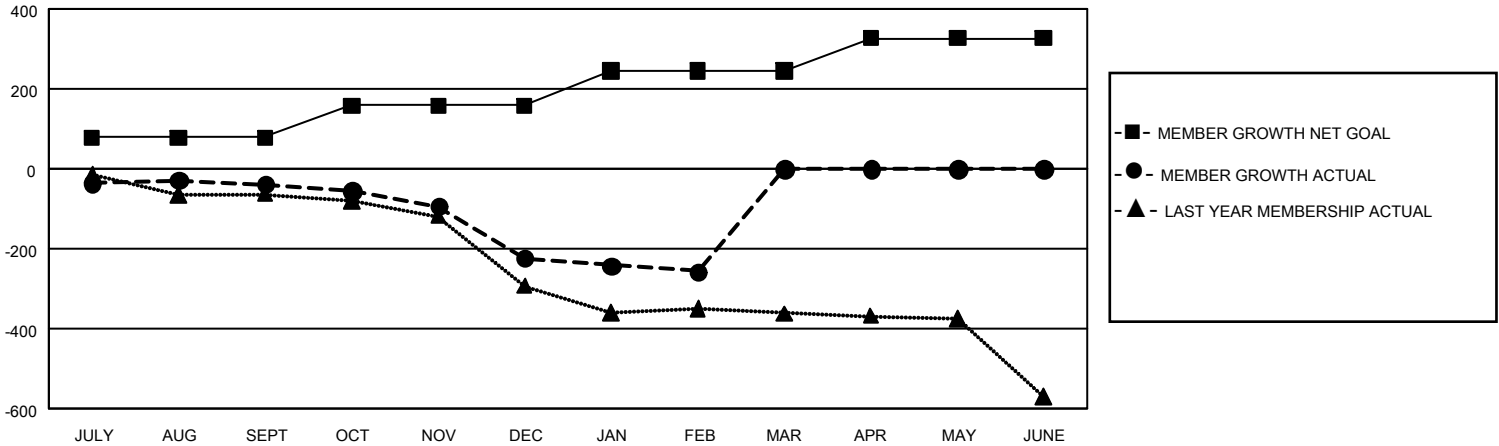
GMT CA 1

| Clubs                 |               |           |               | Members               |                        |                      |  |
|-----------------------|---------------|-----------|---------------|-----------------------|------------------------|----------------------|--|
| RESULTS FOR 2019-2020 |               |           |               | RESULTS FOR 2019-2020 |                        |                      |  |
| QUARTER               | NEW CLUB GOAL | NEW CLUBS | DROPPED CLUBS | QUARTER               | MEMBER GROWTH NET GOAL | MEMBER GROWTH ACTUAL | DROPPED MEMBERS ACTUAL (including transfers) |
| JULY/AUG/SEPT         | 6             | 0         | 1             | JULY/AUG/SEPT         | 237                    | 193                  | 210  |
| OCT/NOV/DEC           | 6             | 0         | 3             | OCT/NOV/DEC           | 240                    | 105                  | 283  |
| JAN/FEB/MAR           | 6             | 0         | 1             | JAN/FEB/MAR           | 261                    | 95                   | 119  |
| APR/MAY/JUNE          | 12            | 0         | 0             | APR/MAY/JUNE          | 243                    | 0                    | 0  |

GOALS AND ACTUAL NEW CLUBS CUMULATIVE



GOALS AND ACTUAL MEMBERS CUMULATIVE



|                         |   |                                     |
|-------------------------|---|-------------------------------------|
| <b>DROPPED CLUBS: 5</b> | 127 CLUBS OF 320 ADDED 1 OR MORE NEW MEMBERS              | <b>GENDER DISTRIBUTION</b>          |
|                         |   | MALE 5,944 (73.10%)                 |
|                         |   | FEMALE 2,187 (26.90%)               |
| <b>DROPPED MEMBERS</b>  | <a href="#">CLICK HERE FOR CUMULATIVE MEMBERSHIP DATA</a> | TOTAL FAMILY UNIT MEMBERS 1,366     |
| DECEASED 75             |   | FAMILY MEMBERS PAYING HALF DUES 701 |
| CLUB CANCELLED 30       |   |                                     |
| OTHER 507               |   |                                     |
| <b>TOTAL 612</b>        |   |                                     |